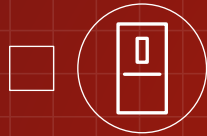


# REDPRINT FOR COMMERCIAL FIRE SAFETY

This checklist outlines the key areas your Responsible Person needs to consider for best practice fire safety. At JLA, we provide full premises solutions for detection & warning systems, active & passive fire fighting equipment and maintenance/testing across any commercial or residential building.



## Fire Doors

Whether you need a new set, or replacements following your fire risk assessment, JLA installs BM Trada, Q Mark FD30 & FD60 doors.



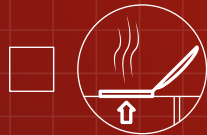
## Fire Extinguishers

Various fire extinguisher types are available from JLA - our experts will advise you on the best products for your business.



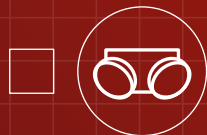
## Fire Alarms

We'll install and maintain all the fire alarms you need, from control panels and call points to detectors and sounders.



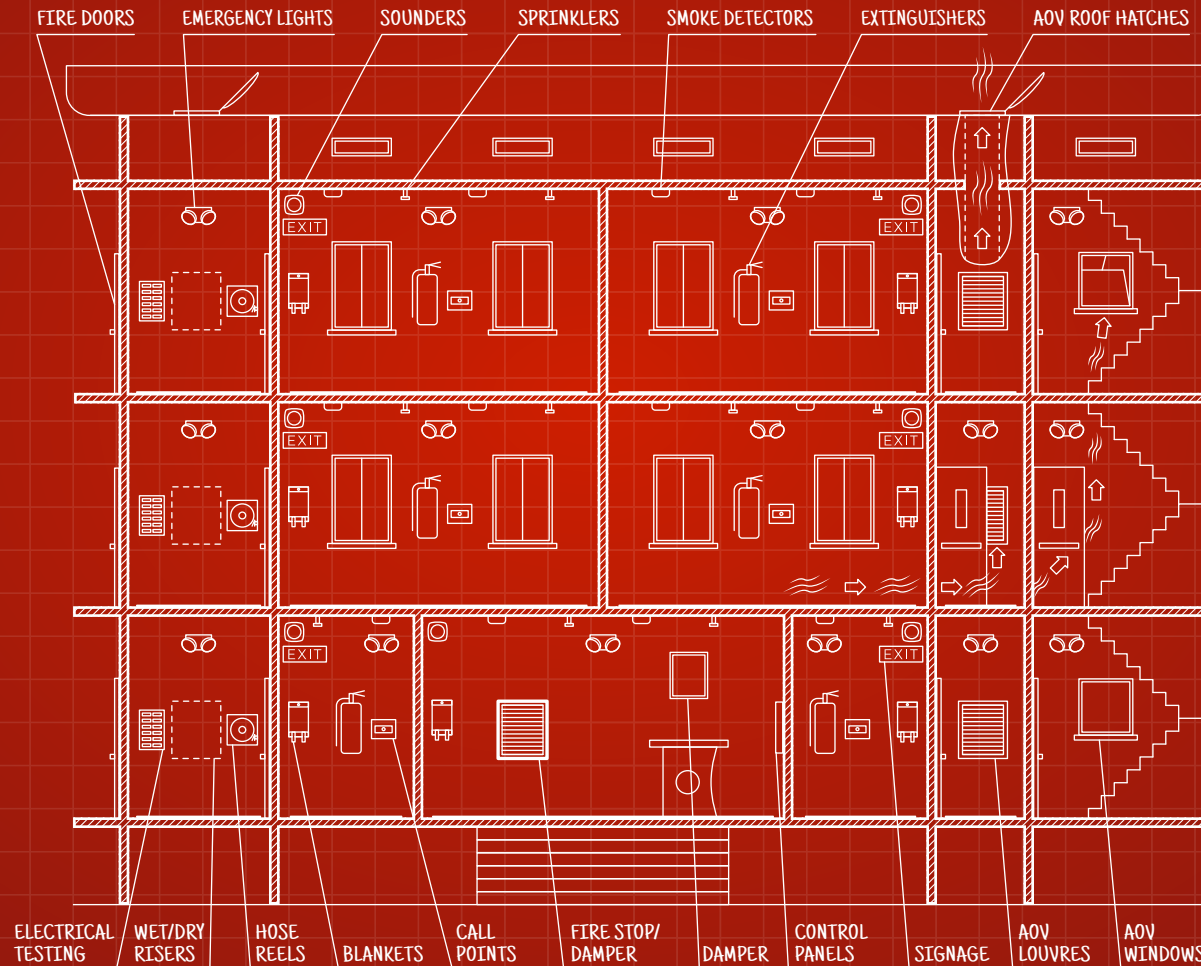
## AOV Systems

Automatic Opening Vents aid evacuation by helping to clear smoke from stairwells and corridors in the event of a fire.



## Emergency Lighting

We'll install and maintain the most suitable, energy-efficient LED lighting along your key escape routes to lead your people to safety.



## Fire Risk Assessments

Under the Regulatory Reform (Fire Safety) Order 2005, a full Fire Safety Risk Assessment is a legal responsibility for all non-domestic premises - and you're also required by law to keep a full written record of your assessment if your business employs five or more people. At JLA we can carry out a full check, along with ongoing fire risk assessment guidance, to help you meet government legislation with a comprehensive audit.



## Maintenance & Servicing

A commercial service & maintenance contract is a must if you need the constant certainty of having fully compliant fire equipment - and the reassurance of knowing your extinguishers, alarms, sensors and sounders will all work as they should in case of emergency. The Regulatory Reform (Fire Safety) Order 2005 also states that it is a legal requirement for all commercial premises to have a 'suitable system of maintenance' in place.